

Importance of land use off airports: case studies of collaboration between airports and local communities



Michael J. Begier

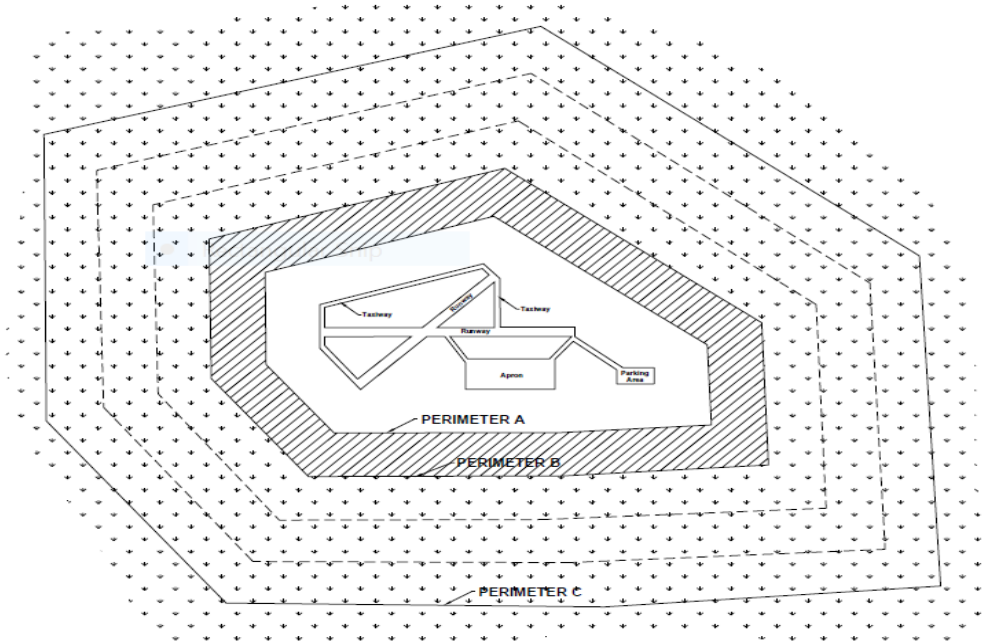
National Coordinator, Airport Wildlife Hazards Program

USDA APHIS Wildlife Services

FAA and ICAO recommendations

ICAO: Airports should conduct an inventory of bird attracting sites within the ICAO defined **13 km** bird circle...

FAA: ...the FAA recommends a distance of **5 statute miles** between the farthest edge of the airport's AOA and the hazardous wildlife...



Why

- Off airport strikes increasing
- Habitat and wildlife outside the airport
- Good relations and communication
- Handling encroachment
- Not always about biology but personal interaction



Teterboro Airport – New Jersey

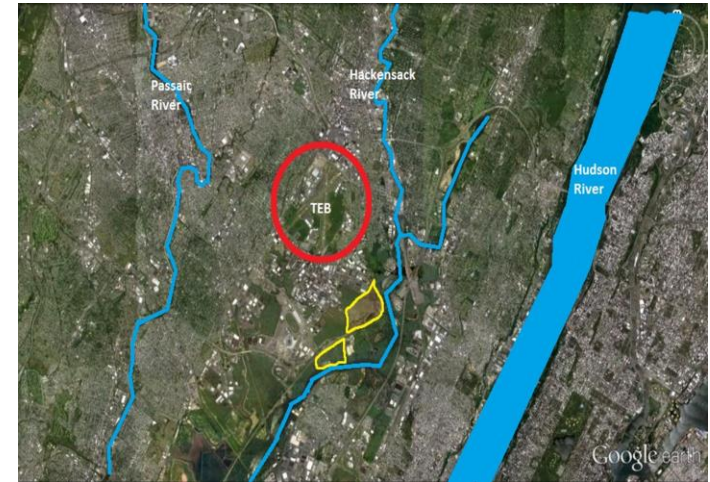
Randolph Air Force Base – Texas



Teterboro Airport (KTEB)

Some background on KTEB

- Oldest operating airport in region
- One of the busiest GA airports in US
- Urban location



Community based Canada goose management program

- October 2009 after Miracle on the Hudson



Shared Benefits

Airport

Reduce risk of damaging or catastrophic event



Community

Lowers damage to parks/recreational areas

Raises water quality

Less aggressive geese

Reduce overabundance

Results

Nest and Egg Management

2010 - 20 Stakeholders and 6 locations

2015 - 55 Stakeholders and 42 locations

Population Management

2010- 20 Stakeholders and 8 locations

2015- 55 Stakeholders and 10 locations

Turf Sweeper for stakeholders.



Randolph Air Force Base (RAFB)

Background on RAFB

- USAF pilot training facility
- Located 15 miles from downtown San Antonio
- City encroachment of the airbase
- “The Showplace of the Air Force”

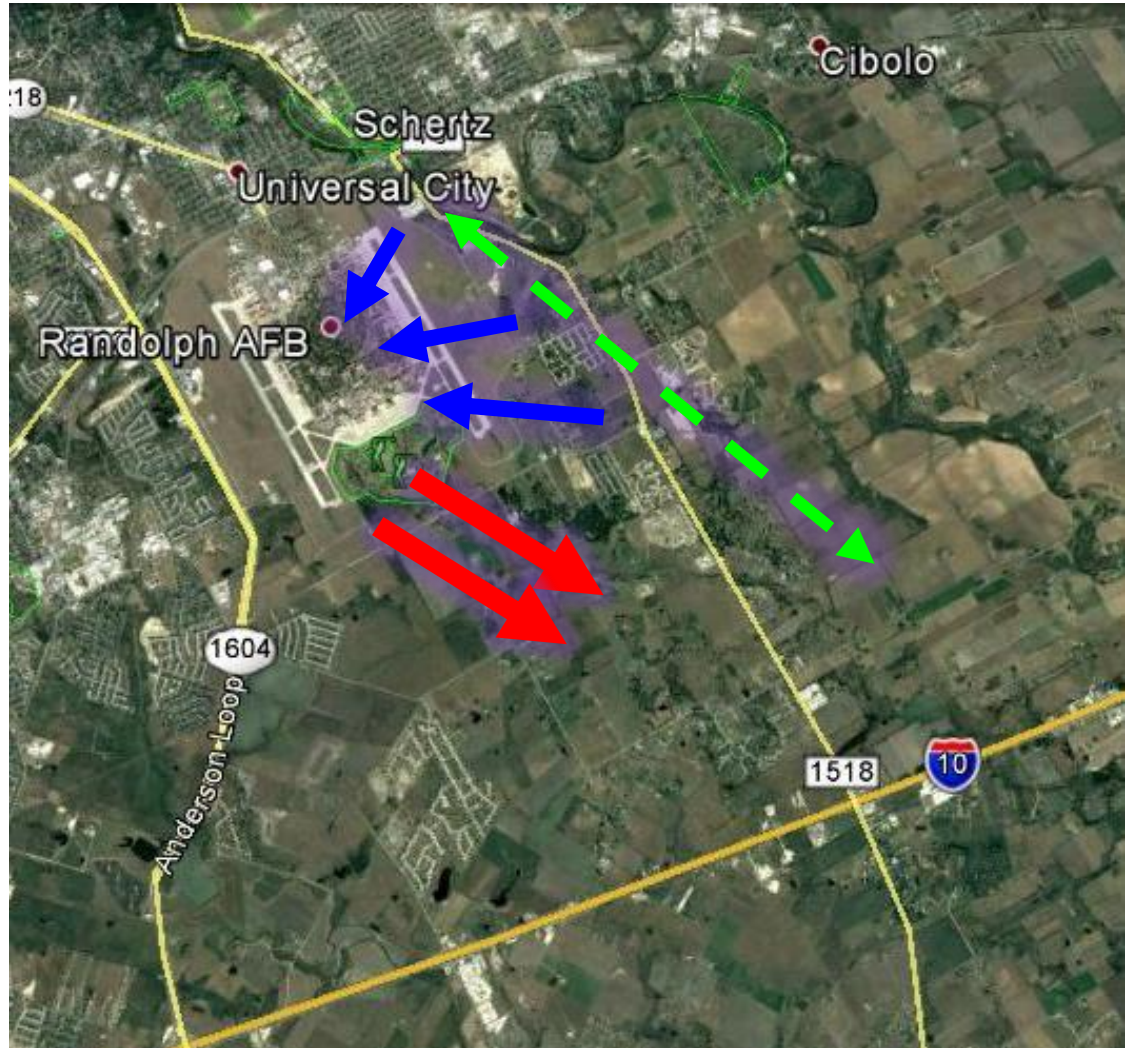
More education and open communication

- Inviting local community leaders for tours of the base
- Discuss encroachment and land management
- Shared decisions for aviation & community safety

2016 white winged dove movements



Red = morning
Green = day
Blue = evening



Shared Benefits

Airbase

Lowers risk of damaging or catastrophic bird strike

Voice on proposed plans

Increased knowledge on white-winged doves



Community

Voice on proposed plans

Compatible Development WG

Airbase remains open

Positive economic impact

Results

- Proposed land management near RAFB vetted by Installation Encroachment Management Team – shared airbase and community voice
- Community understands Accident Potential Zones and Clear Zones
- Communicates to the Management Team about hazards observed in the community and near the airbase
- White-wing dove observations decrease at airbase.



Airport Wildlife Hazards Program
202 - 799 - 7098

mike.begier@aphis.usda.gov



Protecting People
Protecting Agriculture
Protecting Wildlife